

MS-3 08/09  
P1, P2, P4

**SUPPLEMENT DATED AUGUST 7, 2009  
TO THE PROSPECTUS  
DATED MAY 1, 2009  
AS PREVIOUSLY AMENDED  
OF  
MUTUAL SHARES SECURITIES FUND  
(A series of Franklin Templeton Variable Insurance Products Trust)**

The Prospectus is amended as follows:

- I. Under “Goals and Strategies” the following is added to the end of “Main Investments” on page MS-2:

The Fund may purchase asset-backed and mortgage-backed securities. In connection with the purchase of certain asset-backed securities and commercial mortgage-backed securities (“TALF ABS”), the Fund may borrow from the Federal Reserve Bank of New York (“NY Fed”) under its Term Asset-Backed Securities Loan Facility (“TALF”). Pursuant to the TALF Program, the Fund may receive one or more three- to five-year term non-recourse loans to purchase TALF ABS in return for the payment of a haircut amount (usually 5-15% of the loan amount) and a pledge of the TALF ABS.

- II. The following is added to the end of the “Main Risks” section on page MS-5:

**Mortgage Securities and Asset-Backed Securities**

Mortgage securities differ from conventional debt securities because principal is paid back over the life of the security rather than at maturity. The Fund may receive unscheduled prepayments of principal before the security’s maturity date due to voluntary prepayments, refinancing or foreclosure on the underlying mortgage loans. To the Fund this means a loss of anticipated interest, and a portion of its principal investment represented by any premium the Fund may have paid. Mortgage prepayments generally increase when interest rates fall.

Mortgage securities also are subject to extension risk. An unexpected rise in interest rates could reduce the rate of prepayments on mortgage securities and extend their life. This could cause the price of the mortgage securities and the Fund’s share price to fall and would make the mortgage securities more sensitive to interest rate changes.

Issuers of asset-backed securities may have limited ability to enforce the security interest in the underlying assets, and credit enhancements provided to support the securities, if any, may be inadequate to protect investors in the event of default. Like mortgage-backed securities, asset-backed securities are subject to prepayment and extension risks.

**Borrowing**

Because the Fund may borrow money from the NY Fed under the TALF Program, the Fund may engage in leverage by gaining exposure to a TALF ABS through the payment

of a relatively small haircut amount and borrowing the remainder of the purchase price. Such borrowings may exaggerate the effect of any increase or decrease in the value of the TALF ABS on the Fund's net asset value and will subject the Fund to interest and other costs (including administrative fees) associated with the TALF Program. However, such borrowings are non-recourse to the Fund, which should limit some of the risks of leverage.

*Please keep this supplement for future reference.*

MS 2 709  
P1, P2, P4

SUPPLEMENT DATED JULY 23, 2009  
TO THE PROSPECTUS  
DATED MAY 1, 2009  
AS PREVIOUSLY AMENDED  
MUTUAL SHARES SECURITIES FUND  
(A series of Franklin Templeton Variable Insurance Products Trust)

The prospectus is amended as follows:

- I. The paragraph beginning “The Fund may attempt . . .” under “Goals and Strategies – Main Investments” is replaced with the following:

The Fund may attempt, from time to time, to hedge (protect) against currency risks, largely using forward foreign currency exchange contracts and currency futures contracts (including currency index futures contracts) when, in the manager’s opinion, it would be advantageous to the Fund to do so. The Fund may also, from time to time, attempt to hedge against market risk using a variety of derivatives (together, “Hedging Instruments”).

- II The section “Hedging Instruments” under “Main Risks” is replaced in its entirety with the following:

**Hedging Instruments**

The Fund may attempt, from time to time, to hedge (protect) against currency risks, largely using forward foreign currency exchange contracts and currency futures contracts, where available and when, in the manager’s opinion, it would be advantageous to the Fund. A forward foreign currency exchange contract is an agreement to buy or sell a specific amount of currency at a future date and at a price set at the time of the contract. A currency futures contract is similar to a forward foreign currency exchange contract except that the futures contract is in a standardized form that trades on an exchange instead of being privately negotiated with a particular counterparty. Forward foreign currency exchange contracts and currency futures contracts (collectively, “currency contracts”) may reduce the risk of loss from a change in value of a currency, but they also limit any potential gains and do not protect against fluctuations in the value of the underlying position. For example, during periods when the U.S. dollar weakens in relation to a foreign currency, the Fund’s use of a currency hedging program will result in lower returns than if no currency hedging program were in effect.

The Fund may also attempt, from time to time, to hedge against market risks by using derivative investments, which may include purchasing put options. A put option gives

the purchaser of the option, upon payment of a premium, the right to sell, and the seller of the option the obligation to buy, the underlying instrument at the exercise price.

Currency contracts are considered derivative investments, because their value and performance depend, at least in part, on the value of an underlying asset. The Fund's investments in derivatives may involve a small investment relative to the amount of risk assumed. To the extent the Fund enters into these transactions, its success will depend on the manager's ability to predict market movements, and their use may have the opposite effect of that intended. Risks include potential loss due to the imposition of controls by a government on the exchange of foreign currencies, delivery failure, default by the other party (particularly with respect to forward foreign currency exchange contracts), or inability to close out a position because the trading market becomes illiquid. These risks may be heightened during volatile market conditions. To the extent that the Fund is unable to close out a position because of market illiquidity, the Fund may not be able to prevent further losses of value in its derivative holdings. The Fund's liquidity may also be impaired to the extent that it has a substantial portion of its otherwise liquid assets marked as segregated to cover its obligations under such derivative instruments.

Investors should bear in mind that, while the Fund intends to use derivative strategies on a regular basis, it is not obligated to actively engage in these transactions, generally or in any particular kind of derivative, if the manager elects not to do so due to availability, cost or other factors.

*Please keep this supplement for future reference.*

FTVIP-1 7/09  
P1, P2, P3, P4

SUPPLEMENT DATED JULY 22, 2009  
TO THE PROSPECTUS  
DATED MAY 1, 2009

OF

FRANKLIN FLEX CAP GROWTH SECURITIES FUND, CLASSES 2 AND 4  
FRANKLIN GLOBAL REAL ESTATE SECURITIES FUND, CLASSES 1, 2 AND 4  
FRANKLIN GROWTH AND INCOME SECURITIES FUND, CLASSES 1, 2 AND 4  
FRANKLIN HIGH INCOME SECURITIES FUND, CLASSES 1, 2 AND 4  
FRANKLIN INCOME SECURITIES FUND, CLASSES 1, 2 AND 4  
FRANKLIN LARGE CAP GROWTH SECURITIES FUND, CLASSES 1, 2 AND 4  
FRANKLIN LARGE CAP VALUE SECURITIES FUND, CLASSES 2 AND 4  
FRANKLIN RISING DIVIDENDS SECURITIES FUND, CLASSES 1, 2 AND 4  
FRANKLIN SMALL CAP VALUE SECURITIES FUND, CLASSES 1, 2 AND 4  
FRANKLIN SMALL-MID CAP GROWTH SECURITIES FUND, CLASSES 1, 2 AND 4  
FRANKLIN STRATEGIC INCOME SECURITIES FUND, CLASSES 1, 2 AND 4  
FRANKLIN TEMPLETON VIP FOUNDING FUNDS ALLOCATION FUND,  
CLASSES 1, 2 AND 4  
FRANKLIN U.S. GOVERNMENT FUND, CLASSES 1, 2 AND 4  
FRANKLIN ZERO COUPON FUND — MATURING IN DECEMBER 2010, CLASSES 1 AND 2  
MUTUAL GLOBAL DISCOVERY SECURITIES FUND, CLASSES 1, 2 AND 4  
MUTUAL SHARES SECURITIES FUND, CLASSES 1, 2 AND 4  
TEMPLETON DEVELOPING MARKETS SECURITIES FUND, CLASSES 1, 2, 3 AND 4  
TEMPLETON FOREIGN SECURITIES FUND, CLASSES 1, 2, 3 AND 4  
TEMPLETON GLOBAL ASSET ALLOCATION FUND, CLASSES 1, 2, AND 4  
TEMPLETON GLOBAL BOND SECURITIES FUND, CLASSES 1, 2, 3 AND 4  
TEMPLETON GROWTH SECURITIES FUND, CLASSES 1, 2 AND 4  
(Each a series of Franklin Templeton Variable Insurance  
Products Trust)

The Prospectus is amended as follows:

I. For all Funds and Classes, under “Fees and Expenses — Annual Fund Operating Expenses” the following footnote is added:

Note: In periods of market volatility, assets may decline significantly, causing total annual fund operating expenses to become higher than the numbers shown in the table.

II. For Class 2 shares of Franklin Flex Cap Growth Securities Fund, Franklin Global Real Estate Securities Fund, Franklin Income Securities Fund, Franklin Large Cap Growth Securities Fund, Franklin Large Cap Value Securities Fund, Franklin Rising Dividends Securities Fund, Franklin Small Cap Value Securities Fund, Franklin Small-Mid Cap Growth Securities Fund, Franklin Templeton VIP Founding Funds Allocation Fund, Franklin U.S. Government Fund, Mutual Shares Securities Fund and Templeton Growth Securities Fund, footnote 1 or 2, as applicable, referencing the Funds’ rule 12b-1 plan, is amended to read as follows:

While the maximum amount payable under the Fund’s Class 2 rule 12b-1 plan is 0.35% per year of the Fund’s average daily net assets, the Fund’s board of trustees has set the current rate at 0.25% per year through April 30, 2010.

*Please keep this supplement for future reference.*

PROSPECTUS

Franklin Templeton  
Variable Insurance  
Products Trust

Class 2

The SEC has not approved or disapproved these securities or passed upon the adequacy of this prospectus. Any representation to the contrary is a criminal offense.

May 1, 2009



FRANKLIN TEMPLETON  
INVESTMENTS



# Contents

## FRANKLIN TEMPLETON VARIABLE INSURANCE PRODUCTS TRUST

---

### **The Funds**

i Overview

*INFORMATION ABOUT EACH FUND  
YOU SHOULD KNOW BEFORE  
INVESTING*

### **Individual Fund Descriptions**

MS-1 Mutual Shares Securities Fund

### **Additional Information, All Funds**

1 Regulatory Update

1 Dealer Compensation

1 Portfolio Holdings

1 Statements and Reports

1 Administrative Services

### **Distributions and Taxes**

2 Income and Capital Gains Distributions

2 Tax Considerations

---

## FUND ACCOUNT INFORMATION

*INFORMATION ABOUT FUND  
TRANSACTIONS AND SERVICES*

3 Buying Shares

3 Selling Shares

3 Exchanging Shares

3 Market Timing Trading Policy

5 Involuntary Redemptions

6 Fund Account Policies

9 Questions

---

## FOR MORE INFORMATION

*WHERE TO LEARN MORE ABOUT  
EACH FUND*

Back Cover

[THIS PAGE INTENTIONALLY LEFT BLANK]

# Franklin Templeton Variable Insurance Products Trust

## Overview

*Franklin Templeton Variable Insurance Products Trust (the Trust) currently consists of multiple series (Funds), offering a wide variety of investment choices. Funds may be available in multiple classes: Class 1, Class 2, Class 3 and Class 4. The classes are identical except that Class 2, Class 3 and Class 4 each has a distribution plan and Class 3 may assess a redemption fee (see “Share Classes” under Fund Account Information). The Funds are available as investment options in variable annuity or variable life insurance contracts. Shares of the Funds may also be purchased by other mutual funds (Funds of Funds).*

### **Investment Considerations**

- Each Fund has its own investment strategy and risk profile. Generally, the higher the potential rate of return, the greater the risk of loss. Although stocks in the U.S. historically have outperformed other types of investments over the long term, they tend to go up and down more than other types of investments in the short term. Bonds and other fixed income securities historically have achieved returns less than those of stocks, and with lower risk, although the value of fixed income investments can go up and down over the short term. Money market and other very short-term investments historically have achieved the lowest returns, with the lowest risk.
- The following give a general sense of the level of fund assets associated with a particular investment or strategy: “small portion” (less than 10%); “portion” (10% to 25%); “significant” (25% to 50%); “substantial” (50% to 66%); “primary” (66% to 80%); and “predominant” (80% or more). The percentages are not limitations unless specifically stated as such in this prospectus or in the Trust’s Statement of Additional Information (SAI).

### **Risks**

- There can be no assurance that any Fund will achieve its investment goal. Funds that are actively managed are subject to the risk of the investment manager’s judgment in the analysis and evaluation of securities selected for investment.

- All securities markets, interest rates, and currency valuations fluctuate, sometimes dramatically. Because you could lose money by investing in a Fund, take the time to read each Fund description and consider all risks before investing.
- Fund shares are not deposits or obligations of, or guaranteed or endorsed by, any bank, and are not federally insured by the Federal Deposit Insurance Corporation, the Federal Reserve Board, or any other agency of the U.S. government. Fund shares involve investment risks, including the possible loss of principal.

### **Additional Information**

More detailed information about each Fund, its investment policies, and its particular risks can be found in the SAI.

### **Management**

The Funds’ investment managers and their affiliates manage over \$391 billion in assets, as of March 31, 2009. In 1992, Franklin joined forces with Templeton, a pioneer in international investing. The Mutual Series organization became part of the Franklin Templeton organization four years later. In 2001, the Fiduciary Trust team, known for providing global investment management to institutions and high net worth clients worldwide, joined the organization. Today, Franklin Templeton Investments is one of the largest mutual fund organizations in the United States, and offers money management expertise spanning a variety of investment goals.

[THIS PAGE INTENTIONALLY LEFT BLANK]

# Mutual Shares Securities Fund

## Goals and Strategies

### Goals

The Fund's principal investment goal is capital appreciation. Its secondary goal is income.

### Main Investments

Under normal market conditions, the Fund invests primarily in equity securities (including securities convertible into, or that the manager expects to be exchanged for, common or preferred stock) of U.S. and foreign companies that the manager believes are available at market prices less than their value based on certain recognized or objective criteria (intrinsic value). Following this value-oriented strategy, the Fund invests primarily in:

- **Undervalued securities** Stocks trading at a discount to intrinsic value.

And, to a lesser extent, the Fund also invests in:

- **Risk Arbitrage Securities** Securities of companies involved in restructurings (such as mergers, acquisitions, consolidations, liquidations, spinoffs, or tender or exchange offers) or that the manager believes are cheap relative to an economically equivalent security of another or the same company.
- **Distressed Companies** Securities of companies that are, or are about to be, involved in reorganizations, financial restructurings, or bankruptcy.

An equity security represents a proportionate share of the ownership of a company; its value is based on the success of the company's business, any income paid to stockholders, the value of its assets, and general market conditions. Common and preferred stocks, and securities convertible into common stock, are examples of equity securities.

In pursuit of its value-oriented strategy, the Fund is not limited to pre-set maximums or minimums governing the size of the companies in which it may invest. However, as a general rule, the Fund invests the equity portion of its portfolio primarily to predominantly in companies with market capitalizations (share price multiplied by the number of shares of common stock outstanding) greater than \$5 billion, with a portion or significant amount in smaller companies.

While the Fund generally purchases securities for investment purposes, the manager may seek to

influence or control management, or invest in other companies that do so, when the manager believes the Fund may benefit.

The Fund expects to invest significantly in foreign investments, which may include sovereign debt and participations in foreign government debt. A debt security obligates the issuer to the bondholders or creditors, both to repay a loan of money at a future date and generally to pay interest.

The Fund may attempt, from time to time, to hedge (protect) against currency risks, largely using forward foreign currency exchange contracts when, in the manager's opinion it would be advantageous to the Fund to do so. The Fund may also, from time to time, attempt to hedge against market risk using a variety of derivatives (together, Hedging Instruments).

The Fund may also engage from time to time in an "arbitrage" strategy. When engaging in an arbitrage strategy, the Fund typically buys one security while at the same time selling short another security. The Fund generally buys the security that the manager believes is either cheap relative to the price of the other security or otherwise undervalued, and sells short the security that the manager believes is either expensive relative to the price of the other security or otherwise overvalued. In doing so, the Fund attempts to profit from a perceived relationship between the values of the two securities. The Fund generally engages in an arbitrage strategy in connection with an announced corporate restructuring, such as a merger, acquisition or tender offer, or other corporate action or event.

The Fund's investments in Distressed Companies typically involve the purchase of bank debt, lower-rated or defaulted debt securities, comparable unrated debt securities, or other indebtedness (or participations in the indebtedness) of such companies. Such other indebtedness generally represents a specific commercial loan or portion of a loan made to a company by a financial institution such as a bank. Loan participations represent fractional interests in a company's indebtedness and are generally made available by banks or other institutional investors. By purchasing all or a part of a company's direct indebtedness, the Fund, in effect, steps into the shoes of the lender. If the loan is secured, the Fund will have a priority claim to the assets of the company ahead of unsecured creditors and stockholders. The Fund

generally makes such investments to achieve capital appreciation, rather than to seek income.

### **Portfolio Selection**

The manager employs a research driven, fundamental value strategy for each of the Funds. In choosing equity investments, the manager focuses on the market price of a company's securities relative to the manager's own evaluation of the company's asset value, including an analysis of book value, cash flow potential, long-term earnings, and multiples of earnings. Similarly, debt securities and other indebtedness, including loan participations, are generally selected based on the manager's own analysis of the security's intrinsic value rather than the coupon rate or rating of the security. The manager examines each investment separately and there are no set criteria as to specific value parameters, asset size, earnings or industry type.

**The Fund invests primarily in U.S. and foreign equity securities of companies the manager believes are undervalued.**

### **Commodity Exchange Act Exclusion**

The Fund has claimed an exclusion from the definition of the term "commodity pool operator" under the Commodity Exchange Act (CEA), and, therefore, is not subject to registration or regulation as a commodity pool operator under the CEA.

### **Temporary Investments**

The manager may keep a portion, which may be significant at times, of the Fund's assets in cash or invested in high-quality, short-term money market securities, corporate debt, or direct or indirect U.S. and non-U.S. government and agency obligations, when it believes that insufficient investment opportunities meeting the Fund's investment criteria exist or that it may otherwise be necessary to maintain liquidity. For example, when prevailing market valuations for securities are high, there may be fewer securities available at prices below their intrinsic value. In addition, when the manager believes market or economic conditions are unfavorable for investors, it may invest all or substantially all of the Fund's assets in U.S. or non-U.S. dollar denominated short-term investments, including cash or cash equivalents and money market fund shares. In these circumstances, the Fund may be unable to pursue its investment goal.

## Main Risks

The Fund's main risks may affect the Fund's share price, its distributions or income and, therefore, the Fund's performance.

### Stocks

Although this may not be the case in foreign markets, in the U.S. stocks, historically as a class, have outperformed other types of investments over the long term. Individual stock prices, however, tend to go up and down more dramatically. These price movements may result from factors affecting individual companies, industries, or securities markets. For example, a negative development regarding an individual company's earnings, management, or accounting practices may cause its stock price to decline, or a negative industry-wide event or broad-based market drop may cause the stock prices of many companies to decline.

### Value Style Investing

Value securities may not increase in price as anticipated by the manager, and may even decline further in value, if other investors fail to recognize the company's value, or favor investing in faster-growing companies, or if the events or factors that the manager believes will increase a security's market value do not occur.

The Fund's bargain-driven focus may result in the Fund choosing securities that are not widely followed by other investors. Securities that are considered "cheaply" priced also may include those of companies reporting poor earnings, companies whose share prices have declined sharply (such as growth companies that have recently stumbled to levels considered "cheap" in the manager's opinion), turnarounds, cyclical companies, or companies emerging from bankruptcy, all of which may have a higher risk of being ignored or rejected, and therefore undervalued, by the market or losing more value.

**Because the securities the Fund holds fluctuate in price, the value of your investment in the Fund will go up and down. You could lose money.**

### Risk Arbitrage Securities and Distressed Companies

A merger or other restructuring, or a tender or exchange offer, proposed or pending at the time the Fund invests in Risk Arbitrage Securities may not be completed on the terms or within the time frame contemplated, resulting in losses to the Fund. Debt obligations of Distressed Companies typically are unrated, lower-rated, in default or close to default. Also, securities of Distressed Companies are generally more likely to become worthless than the securities of more financially stable companies.

### Foreign Securities

Investing in foreign securities, including securities of foreign governments, typically involves more risks than investing in U.S. securities. Certain of these risks also may apply to securities of U.S. companies with significant foreign operations. These risks can increase the potential for losses in the Fund and affect its share price.

**Currency exchange rates.** Foreign securities may be issued and traded in foreign currencies. As a result, their values may be affected by changes in exchange rates between foreign currencies and the U.S. dollar, as well as between currencies of countries other than the U.S. For example, if the value of the U.S. dollar goes up compared to a foreign currency, an investment traded in that foreign currency will go down in value because it will be worth fewer U.S. dollars.

**Political and economic developments.** The political, economic and social structures of some foreign countries may be less stable and more volatile than those in the U.S. Investments in these countries may be subject to the risks of internal and external conflicts, currency devaluations, foreign ownership limitations and tax increases. It is possible that a government may take over the assets or operations of a company or impose restrictions on the exchange or export of currency or other assets. Some countries also may have different legal systems that may make it difficult for the Fund to vote proxies, exercise shareholder rights, and pursue legal remedies with respect to its foreign investments. Diplomatic and political developments, including rapid and adverse political changes, social instability, regional conflicts, terrorism and war, could affect the economies, industries and securities and currency markets, and

the value of the Fund's investments, in non-U.S. countries. These factors are extremely difficult, if not impossible, to predict and take into account with respect to the Fund's investments.

**Trading practices.** Brokerage commissions and other fees generally are higher for foreign securities. Government supervision and regulation of foreign stock exchanges, currency markets, trading systems and brokers may be less than in the U.S. The procedures and rules governing foreign transactions and custody (holding of the Fund's assets) also may involve delays in payment, delivery or recovery of money or investments.

**Availability of information.** Foreign companies may not be subject to the same disclosure, accounting, auditing and financial reporting standards and practices as U.S. companies. Thus, there may be less information publicly available about foreign companies than about most U.S. companies.

**Limited markets.** Certain foreign securities may be less liquid (harder to sell) and their prices may be more volatile than many U.S. securities. This means the Fund may at times be unable to sell foreign securities at favorable prices. In emerging markets, a previously established liquid securities market may become illiquid (temporarily or for longer periods of time) due to economic or political conditions.

**Emerging markets.** The risks of foreign investments typically are greater in less developed countries, sometimes referred to as emerging markets. For example, political and economic structures in these countries may be less established and may change rapidly. These countries also are more likely to experience high levels of inflation, deflation or currency devaluation, which can harm their economies and securities markets and increase volatility. In fact, short-term volatility in these markets and declines of 50% or more are not uncommon. Restrictions on currency trading that may be imposed by emerging market countries will have an adverse effect on the value of the securities of companies that trade or operate in such countries.

### **Smaller and Midsize Companies**

While smaller and midsize companies may offer substantial opportunities for capital growth, they also involve substantial risks and should be considered

speculative. Historically, smaller and midsize company securities have been more volatile in price than larger company securities, especially over the short term. Among the reasons for the greater price volatility are the less certain growth prospects of smaller and midsize companies, the lower degree of liquidity in the markets for such securities, and the greater sensitivity of smaller and midsize companies to changing economic conditions.

In addition, smaller and midsize companies may lack depth of management, be unable to generate funds necessary for growth or development, or be developing or marketing new products or services for which markets are not yet established and may never become established.

### **Credit**

An issuer of debt securities may be unable to make interest payments and repay principal when due. Changes in an issuer's financial strength or in a security's credit rating may affect a security's value and, thus, impact Fund performance.

### **Lower-Rated and Unrated Debt Securities**

Debt securities rated below investment grade, sometimes called "junk bonds," and the type of unrated debt securities purchased by the Fund, generally are considered to have more risk than higher-rated debt securities. They also may fluctuate more in price, and are less liquid than higher-rated debt securities. Their prices are especially sensitive to developments affecting the company's business and to ratings changes, and typically rise and fall in response to factors that affect the company's stock prices. Issuers of such lower-rated debt securities are not as strong financially, and are more likely to encounter financial difficulties and be more vulnerable to adverse changes in the economy, such as a recession or a sustained period of rising interest rates. The risk that the Fund may lose its entire investment in defaulted bonds is greater in comparison to investing in non-defaulted bonds. Purchasers of participations in indebtedness, such as the Fund, must rely on the financial institution issuing the participation to assert any rights against the borrower with respect to the underlying indebtedness. In addition, the Fund takes on the risk as to the creditworthiness of the bank or

other financial intermediary, as well as of the company issuing the underlying indebtedness.

### **Hedging Instruments**

The Fund, may attempt from time to time to hedge (protect) against currency risks, largely using forward foreign currency exchange contracts, where available and when, in the manager's opinion, it would be advantageous to the Fund. A forward foreign currency exchange contract is an agreement to buy or sell a specific currency at a future date and at a price set at the time of the contract. Forward foreign currency exchange contracts may reduce the risk of loss from a change in value of a currency, but they also limit any potential gains and do not protect against fluctuations in the value of the underlying position. For example, during periods when the U.S. dollar weakens in relation to a foreign currency the Fund's use of a currency hedging program will result in lower returns than if no currency hedging programs were in effect.

The Fund may also attempt, from time to time, to hedge against market risks by using derivative investments, which may include purchasing put options. A put option gives the purchaser of the option, upon payment of a premium, the right to sell, and the seller of the option the obligation to buy, the underlying instrument at the exercise price.

Forward foreign currency exchange contracts and put options are considered derivative investments, because their value and performance depend, at least in part, on the value and performance of an underlying asset. The Fund's investment in derivatives may involve a small investment relative to the amount of risk assumed. To the extent the Fund enters into these transactions, its success will depend on the manager's ability to predict market movements, and their use may have the opposite effect of that intended. Risks include potential loss due to the imposition of controls by a government on the exchange of foreign currencies, the loss of any premium paid to enter into the transaction, delivery failure, default by any other party, or inability to close out a position because the trading market becomes illiquid.

### **Illiquid Securities**

The Fund may invest up to 15% of its net assets in illiquid securities, which are securities with a limited trading market. Illiquid securities may not be readily sold or may only be resold at a price significantly lower than if they were liquid.

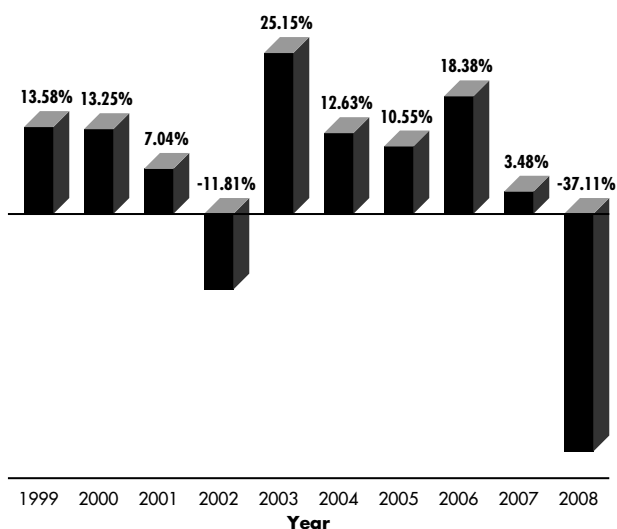
More detailed information about the Fund, its policies, and risks can be found in the SAI.

## Performance

This bar chart and table show the volatility of the Fund's returns, which is one indicator of the risks of investing in the Fund. The bar chart shows changes in the Fund's returns from year to year over the calendar years shown. The table shows how the Fund's average annual total returns compare to those of a broad-based securities market index. Of course, past performance cannot predict or guarantee future results. All Fund performance assumes reinvestment of dividends and capital gains.

**Performance reflects all Fund expenses but does not include any fees or sales charges imposed by variable insurance contracts or Funds of Funds. If they had been included, the returns shown below would be lower.** Investors should consult the variable contract prospectus, disclosure document or Fund of Funds prospectus for more information.

### CLASS 2 ANNUAL TOTAL RETURNS



<b>Best Quarter:</b>	<b>Q2'03</b>	<b>13.21%</b>
<b>Worst Quarter:</b>	<b>Q4'08</b>	<b>-21.10%</b>

### AVERAGE ANNUAL TOTAL RETURNS

For the periods ended December 31, 2008

	1 Year	5 Years	10 Years
<b>Mutual Shares Securities Fund - Class 2<sup>1</sup></b>	-37.11%	-0.83%	3.84%
<b>S&amp;P 500<sup>®</sup> Index<sup>2</sup></b>	-37.00%	-2.19%	-1.38%

1. Because Class 2 shares were not offered until January 6, 1999, Class 2 Fund performance for prior periods represents the historical results of Class 1 shares. For periods beginning on January 6, 1999, Class 2's results reflect an additional 12b-1 fee expense, which also affects future performance.

2. Source: © 2009 Morningstar. Standard & Poor's 500 Index (S&P 500) consists of 500 stocks chosen for market size, liquidity and industry group representation. Each stock's weight in the index is proportionate to its market value. The S&P 500 is one of the most widely used benchmarks of U.S. equity performance. An index is unmanaged and includes reinvested distributions. One cannot invest directly in an index nor is an index representative of the Fund's investments.

## Fees and Expenses

This table describes the fees and expenses that you may pay if you buy and hold shares of the Fund. **The table and the example do not include any fees or sales charges imposed by variable insurance contracts or by Funds of Funds.** If they were included, your costs would be higher. Investors should consult the variable contract prospectus, disclosure document or Fund of Funds prospectus for more information.

### SHAREHOLDER FEES (fees paid directly from your investment)

	Class 2
Maximum sales charge (load) imposed on purchases	N/A

### ANNUAL FUND OPERATING EXPENSES (expenses deducted from Fund assets)

	Class 2
Management fees	0.60%
Distribution and service (12b-1) fees <sup>1</sup>	0.25%
Other expenses, including administration fees	0.13%
<b>Total annual Fund operating expenses<sup>2</sup></b>	<b>0.98%</b>

1. While the maximum amount payable under the Fund's Class 3 rule 12b-1 plan is 0.35% per year of the Fund's average daily net assets, the Fund's board of trustees has set the current rate at 0.25% per year through April 30, 2010.

2. Fund shares are held by a limited number of Insurers and, when applicable, Funds of Funds. Substantial withdrawals by one or more Insurers or Funds of Funds could reduce Fund assets, causing total fund expenses to become higher.

### EXAMPLE

This example can help you compare the cost of investing in the Fund with the cost of investing in other mutual funds. It assumes:

- You invest \$10,000 for the periods shown;
- Your investment has a 5% return each year; and
- The Fund's operating expenses remain the same.

Although your actual costs may be higher or lower, based on these assumptions your costs would be:

1 Year	3 Years	5 Years	10 Years
\$100	\$312	\$542	\$1,201

## Management

Franklin Mutual Advisers, LLC (Franklin Mutual), 101 John F. Kennedy Parkway, Short Hills, NJ 07078, is the Fund's investment manager.

The Fund is managed by a team of dedicated professionals focused on investments in equity securities they consider to be undervalued. The portfolio managers of the team are as follows:

**PETER LANGERMAN**

President and Chief Executive Officer  
of Franklin Mutual

Mr. Langerman assumed the duties of lead portfolio manager of the Fund when he rejoined Franklin Templeton Investments in 2005 and became a co-lead portfolio manager in 2007. He joined Franklin Templeton Investments in 1996, serving in various capacities, including President and Chief Executive Officer of Franklin Mutual and member of the management team of the Fund, before leaving in 2002 and serving as director of New Jersey's Division of Investment, overseeing employee pension funds. Between 1986 and 1996, he was employed at Heine Securities Corporation, the predecessor of Franklin Mutual.

**F. DAVID SEGAL**

Portfolio Manager of Franklin Mutual

Mr. Segal assumed the duties of co-lead portfolio manager with Mr. Langerman in 2007 and had been a portfolio manager of the Fund since joining Franklin Templeton Investments in 2002. Prior to joining Franklin Templeton Investments in 2002, he was an analyst in the Structured Finance Group of MetLife for the period 1999-2002.

**DEBBIE TURNER, CFA**

Portfolio Manager of Franklin Mutual

Ms. Turner has been a portfolio manager of the Fund since 2001 and has been with Franklin Templeton Investments since 1996.

As co-lead portfolio managers of the Fund, Mr. Langerman and Mr. Segal have equal authority over all aspects of the Fund's investment portfolio, including but not limited to, purchases and sales of individual securities, portfolio risk assessment, and the management of daily cash balances in accordance with anticipated investment management requirements. The degree to which either may perform these functions, and the nature of these functions, may change from time to time. Ms. Turner provides the Fund with research and advice on the purchases and sales of individual securities, and portfolio risk assessment.

CFA® and Chartered Financial Analyst® are trademarks owned by CFA Institute.

The Fund's SAI provides additional information about portfolio manager compensation, other accounts that they manage and their ownership of Fund shares.

The Fund pays Franklin Mutual a fee for managing the Fund's assets. For fiscal year ended December 31, 2008, the Fund paid 0.60% of its average daily net assets to Franklin Mutual for its services.

A discussion regarding the basis for the board of trustees approving the investment management contract of the Fund is available in the Fund's semiannual report to shareholders for the six-month period ended June 30.

## Financial Highlights

This table presents the financial performance of Class 2 shares for the past five years or since inception. The table shows certain information on a single Fund share basis (per share performance). It also shows some key Fund statistics, such as total return (past performance) and expense ratios. Total return represents the annual change in value of a share assuming reinvestment of dividends and capital gains. This information has been derived from the financial statements audited by PricewaterhouseCoopers LLP. Their report, along with the Fund's financial statements, is included in the annual report, which is available upon request.

Class 2	Year Ended December 31,				
	2008	2007	2006	2005	2004
Per share operating performance (for a share outstanding throughout the year)					
Net asset value, beginning of year	\$20.19	\$20.46	\$18.18	\$16.64	\$14.90
Income from investment operations: <sup>a</sup>					
Net investment income <sup>b</sup>	0.32	0.48	0.34	0.29	0.18
Net realized and unrealized gains (losses)	(7.49)	0.31	2.84	1.46	1.68
Total from investment operations	(7.17)	0.79	3.18	1.75	1.86
Less distributions from:					
Net investment income	(0.51)	(0.31)	(0.25)	(0.15)	(0.12)
Net realized gains	(0.73)	(0.75)	(0.65)	(0.06)	—
Total distributions	(1.24)	(1.06)	(0.90)	(0.21)	(0.12)
<b>Net asset value, end of year</b>	<b>\$11.78</b>	<b>\$20.19</b>	<b>\$20.46</b>	<b>\$18.18</b>	<b>\$16.64</b>
Total return <sup>c</sup>	(37.11%)	3.48%	18.38%	10.55%	12.63%
Ratios to average net assets					
Expenses <sup>d,e</sup>	0.98%	0.97%	1.06%	1.03%	1.00%
Expenses - excluding dividend expense on securities sold short <sup>f</sup>	0.98%	0.97%	0.99%	0.99%	0.98%
Net investment income	1.91%	2.33%	1.77%	1.72%	1.15%
Supplemental data					
Net assets, end of year (000's)	\$3,303,761	\$5,925,551	\$5,140,878	\$3,596,889	\$2,464,374
Portfolio turnover rate	44.11%	41.73% <sup>f</sup>	19.75%	19.59%	31.49%

a. The amount shown for a share outstanding throughout the period may not correlate with the Statement of Operations in the Annual Report for the period due to the timing of sales and repurchases of the Fund shares in relation to income earned and/or fluctuating market value of the investments of the Fund.

b. Based on average daily shares outstanding.

c. Total return does not include any fees, charges or expenses imposed by the variable annuity and life insurance contracts for which the Franklin Templeton Variable Insurance Products Trust serves as an underlying investment vehicle.

d. Includes dividend expense on securities sold short which varies from period to period. See below for expense ratios that reflect only operating expenses.

e. Benefit of expense reduction rounds to less than 0.01%.

f. Excludes the value of portfolio securities delivered as a result of redemption in-kind.

[THIS PAGE INTENTIONALLY LEFT BLANK]

# Additional Information, All Funds

## Regulatory Update

In 2003 and 2004, multiple lawsuits were filed against Franklin Resources, Inc., and certain of its investment advisor subsidiaries, among other defendants, alleging violations of federal securities and state laws and seeking, among other relief, monetary damages, restitution, removal of fund trustees, directors, investment managers, administrators and distributors, rescission of management contracts and 12b-1 plans, and/or attorneys' fees and costs. Specifically, the lawsuits claim breach of duty with respect to alleged arrangements to permit market timing and/or late trading activity, or breach of duty with respect to the valuation of the portfolio securities of certain Templeton funds managed by Franklin Resources, Inc. subsidiaries, allegedly resulting in market timing activity. The lawsuits are styled as class actions, or derivative actions on behalf of either the named funds or Franklin Resources, Inc., and have been consolidated for pretrial purposes, along with hundreds of other similar lawsuits against other mutual fund companies. All of the Franklin Templeton Investments mutual funds that were named in the litigation as defendants have since been dismissed, as have the independent trustees to those funds.

Franklin Resources, Inc. previously disclosed these private lawsuits in its regulatory filings and on its public website. Any material updates regarding these matters will be disclosed in Franklin Resources, Inc.'s Form 10-Q or Form 10-K filings with the U.S. Securities and Exchange Commission.

### **DEALER COMPENSATION**

Franklin Templeton Distributors, Inc. (Distributors) and/or its affiliates may provide financial support to securities dealers that sell shares of Franklin Templeton funds, or participate in the offering of variable insurance products that invest in the Trust (VIP Qualifying Dealers); such financial support may be made by payments from Distributors' and/or its affiliates' resources, including from Distributors' retention of underwriting concessions and, in the case of Rule 12b-1 share classes, from payments to Distributors under such plans.

Distributors makes these payments in connection with VIP Qualifying Dealers' efforts to educate financial advisors about our funds. A number of factors will be considered in determining payments, including such dealer's sales, assets and redemption rates, and the

quality of the dealer's relationship with Distributors. Distributors will, on an annual basis, determine the advisability of continuing these payments. To the extent permitted by SEC and FINRA rules and other applicable laws and regulations, Distributors and/or its affiliates may pay or allow other promotional incentives or payments to dealers. Sale of shares of the Funds, as well as shares of other Franklin Templeton funds, is not considered a factor in the selection of securities dealers to execute the Funds' portfolio transactions. Accordingly, the allocation of portfolio transactions for execution by VIP Qualifying Dealers is not considered marketing support payments.

You can find further details in the SAI about the payments made by Distributors and/or its affiliates and the services provided by your VIP Qualifying Dealer. While your insurance company's fees and charges are generally disclosed in the insurance contract prospectus, your VIP Qualifying Dealer may charge you additional fees or commissions other than those disclosed in this prospectus. You can ask your insurance company and VIP Qualifying Dealer for information about any payments they receive from Distributors and/or its affiliates and any services they provide, as well as about fees and/or commissions they charge. These payments and other fees and charges are not reflected in the fee table included in this prospectus. Additional disclosure may be included in the insurance contract prospectus.

### **PORTFOLIO HOLDINGS**

A description of the Trust's policies and procedures regarding the release of portfolio holdings information for each Fund of the Trust (collectively the Fund) is also available in the Trust's SAI. Portfolio holdings information can be viewed online at [franklintempleton.com](http://franklintempleton.com).

### **STATEMENTS AND REPORTS**

Contract Owners should receive financial reports for the Fund related to their Contract from the sponsoring Insurer every six months.

### **ADMINISTRATIVE SERVICES**

Franklin Templeton Services, LLC provides business administration services and facilities for the Fund and makes certain payments (see the SAI for more information) to insurance companies out of its own resources for certain administrative services.

---

## Distributions and Taxes

### **INCOME AND CAPITAL GAINS DISTRIBUTIONS**

The Fund normally intends to pay annual dividends representing substantially all of its net investment income and to distribute annually any net realized capital gains. Dividends and capital gains are calculated and distributed the same way for the Fund and for each class of shares. The amount of any income dividends per share will differ for each class, however, generally due to the difference in the applicable Rule 12b-1 fees. Class 1 shares are not subject to Rule 12b-1 fees.

Dividends paid by the Fund will be automatically reinvested in additional shares of the Fund or, if requested, paid in cash to the insurance company shareholder.

### **TAX CONSIDERATIONS**

Insurance company separate accounts may invest in the Fund and classes of the Fund and, in turn, may offer variable annuity and variable life insurance products to investors through insurance contracts. Because the insurance company separate accounts are generally the shareholders in the Fund, all of the tax characteristics of the Fund's investments flow into the separate accounts and not to each individual contract owner. The tax consequences from each contract owner's investment in a variable annuity or variable life insurance contract will depend upon the provisions of these contracts, and contract owners should consult with their contract prospectus for more information on these tax consequences.

# Fund Account Information

## Buying Shares

Insurance companies offer variable annuity and variable life insurance products to investors including pension plans (Contracts), through separate accounts (Insurers). When shares of the Fund are investment options of Contracts, separate accounts, and not the owners of the Contracts including group contract and pension plan certificate holders (Contract Owners), are generally the shareholders of the Fund. Shares of the Fund may also be purchased by other mutual funds (Funds of Funds).

Shares of the Fund are sold at net asset value (NAV). When sold in connection with Contracts, the Fund correspond with the investment options offered by the Insurer to Contract Owners. The board of trustees monitors the Fund for the existence of any material irreconcilable conflicts of interest between different

types of their separate account investors. If there were any such conflicts, the board of trustees will determine what action, if any, shall be taken in response. Please refer to the accompanying contract prospectus for information on how to select the Fund as an investment option.

Contract Owners' payments will be allocated by the insurance company separate account to sub-accounts that purchase shares of the Fund corresponding with the sub-account chosen by the Contract Owner, and are subject to any limits or conditions in the contract. Requests to buy shares are processed at the NAV next calculated after we or our designees receive the request in proper form. The Fund does not issue share certificates.

---

## Selling Shares

An Insurer that holds shares of the Fund in connection with a Contract sells shares of the Fund to make benefit or surrender payments or to execute exchanges

(transfers) between investment options under the terms of the Contract.

---

## Exchanging Shares

Contract Owners may exchange interests in sub-accounts of an insurance company separate account that corresponds with shares of any one class or Fund, for interests in sub-accounts that correspond with shares of other classes or Fund, subject to the terms and any specific limitations on the exchange (or "transfer") privilege described in the Contract prospectus.

Frequent exchanges or excessive trading can harm performance and interfere with Fund portfolio management or operations and increase Fund costs. The Funds discourage short-term or excessive trading and may seek to restrict or reject such trading (please see "Market Timing Trading Policy," below).

---

## Market Timing Trading Policy

The board of trustees has adopted the following policies and procedures with respect to market timing (Market Timing Trading Policy):

**Market timing generally.** The Fund discourages and does not intend to accommodate short-term or frequent purchases and redemptions of fund shares,

often referred to as “market timing,” and asks its Fund of Fund investors and participating Insurers for their cooperation in trying to discourage such activity in their separate accounts by Contract Owners and their financial advisors. The Fund intends to seek to restrict or reject such trading or take other action, as described below, if in the judgment of the Fund manager or transfer agent such trading may interfere with the efficient management of the Fund’s portfolio, may materially increase the Fund’s transaction costs, administrative costs or taxes, or may otherwise be detrimental to the interests of the Fund and its shareholders.

**Market timing consequences.** If information regarding trading activity in the Fund or in any other Franklin Templeton fund or non-Franklin Templeton fund is brought to the attention of the Fund’s manager or transfer agent and based on that information the Fund or its manager or transfer agent in their sole discretion conclude that such trading may be detrimental to the Fund as described in this Market Timing Trading Policy, the Fund may temporarily or permanently bar future purchases into the Fund or, alternatively, may limit the amount, number or frequency of any future purchases and/or the method by which an Insurer or a Fund of Funds may request future purchases and redemptions (including purchases and/or redemptions by an exchange or transfer between the Fund and any other mutual fund).

In considering trading activity, the Fund may consider, among other factors, trading history both directly and, if known, through financial intermediaries, in the Fund, in other Franklin Templeton funds, in non-Franklin Templeton mutual funds, or in accounts under common control or ownership.

**Market timing through Insurers.** *As a Contract Owner you are also subject to this policy.* An Insurer’s order for purchases and/or redemptions pursuant to a Contract Owner’s instructions (including purchases and/or redemptions by an exchange or transfer between the Fund and any mutual fund) are submitted pursuant to aggregated orders (Aggregated Orders). A Fund of Fund’s order for purchases and/or redemptions pursuant to its investors’ instructions are also submitted pursuant to Aggregated Orders. While the Fund will encourage Insurers and Funds

of Funds to apply the Fund’s Market Timing Trading Policy to their investors, the Fund is limited in its ability to monitor the trading activity or enforce the Fund’s Market Timing Trading Policy because Insurers and Funds of Funds have the relationships with, and are responsible for maintaining the account records of, the individual investors. For example, should it occur, the Fund may not be able to detect market timing that may be facilitated by financial intermediaries or made difficult to identify in the Aggregated Orders used by Insurers and Fund of Fund investors.

Therefore, the Fund or its agent selectively monitor the Aggregated Orders used by Insurers and Fund of Fund investors for purchases, exchanges and redemptions in respect of all their investors and seek the cooperation of Insurers and Fund of Fund investors to apply the Fund’s Market Timing Trading Policy. There may be legal and technological limitations on the ability of an Insurer or Fund of Fund to impose trading restrictions and to apply the Fund’s Market Timing Trading Policy to their investors through such methods as implementing short-term trading limitations or restrictions, assessing the Fund’s redemption fee (if applicable) and monitoring trading activity for what might be market timing. As a result, the Fund may not be able to determine whether trading by Insurers or Funds of Funds in respect of their investors is contrary to the Fund’s Market Timing Trading Policy.

**Risks from market timers.** Depending on various factors, including the size of the Fund, the amount of assets the portfolio manager typically maintains in cash or cash equivalents and the dollar amount and number and frequency of trades and the types of securities in which the Fund typically invests, short-term or frequent trading may interfere with the efficient management of the Fund’s portfolio, increase the Fund’s transaction costs, administrative costs and taxes and/or impact Fund performance.

In addition, if the nature of the Fund’s portfolio holdings exposes the Fund to “arbitrage market timers,” the value of the Fund’s shares may be diluted if redeeming shareholders receive proceeds (and buying shareholders receive shares) based upon net asset values which do not reflect appropriate fair value prices. Arbitrage market timing occurs when an investor seeks to take advantage of the possible

delay between the change in the value of a mutual fund's portfolio holdings and the reflection of the change in the fund's net asset value per share. A Fund that invests significantly in foreign securities may be particularly vulnerable to arbitrage market timing. Arbitrage market timing in foreign investments may occur because of time zone differences between the foreign markets on which the Fund's international portfolio securities trade and the time as of which the Fund's NAV is calculated. Arbitrage market timers may purchase shares of the Fund based on events occurring after foreign market closing prices are established, but before calculation of the Fund's NAV. One of the objectives of the Trust's fair value pricing procedures is to minimize the possibilities of this type of arbitrage market timing (please see "Valuation - Foreign Securities – Potential Impact of Time Zones and Market Holidays").

Since the Fund may invest significantly in securities that are, or may be, restricted, unlisted, traded infrequently, thinly traded, or relatively illiquid (relatively illiquid securities), the Fund may be particularly vulnerable to arbitrage market timing. An arbitrage market timer may seek to take advantage of a possible differential between the last available market prices for one or more of these relatively illiquid securities that are used to calculate the Fund's net asset value and the latest indications of market values for those securities. One of the objectives of the Fund's fair value pricing procedures is to minimize the possibilities of this type of arbitrage market timing (please see "Fair Valuation – Individual Securities" under the heading "Fund Account Policies", below).

The Fund is currently using several methods to reduce the risk of market timing. These methods include:

- seeking the cooperation of Insurers and Funds of Funds to assist the Fund in identifying potential market timing activity;
- committing staff to selectively review on a continuing basis recent trading activity in order to identify trading activity that may be contrary to the Fund's Market Timing Trading Policy;
- monitoring potential price differentials following the close of trading in foreign markets to determine whether the application of fair value pricing procedures is warranted; and
- seeking the cooperation of financial intermediaries to assist the Fund in identifying market timing activity.

Though these methods involve judgments that are inherently subjective and involve some selectivity in their application, the Fund seeks to make judgments and applications that are consistent with the interests of the Fund's shareholders. There is no assurance that the Fund or its agents will gain access to any or all information necessary to detect market timing in Insurers' separate accounts. While the Fund will seek to take actions (directly and with the assistance of Insurers) that will detect market timing, it cannot represent that such trading activity can be minimized or completely eliminated.

**Revocation of market timing trades.** Transactions placed in violation of a Fund's Market Timing Trading Policy or exchange limit guidelines are not necessarily deemed accepted by the Fund and may be cancelled or revoked by the Fund, in full or in part, following receipt by the Fund.

---

## Involuntary Redemptions

The Fund reserves the right to close an account (and involuntarily redeem any investment) if it is deemed to have engaged in activities that are illegal (such as late trading) or otherwise believed to be detrimental

to the Fund (such as market timing), to the fullest extent permitted by law and consistent with the best interests of the Fund and its shareholders. Involuntary redemptions may be in cash or in kind.

---

## Fund Account Policies

### **CALCULATING SHARE PRICE**

When they buy and sell shares, the Fund's shareholders pay and receive the net asset value (NAV) per share.

The value of a mutual fund is determined by deducting the fund's liabilities from the total assets of the portfolio. The NAV per share of a class of the Fund is determined by dividing the net asset value of the Fund's share class by the applicable number of shares outstanding of that share class. The Fund's NAV does not include any fee or sales charge imposed by variable insurance contracts for which the Fund is an investment option or Funds of Funds that purchase shares of the Fund. Investors should consult the contract prospectus, disclosure document or Fund of Funds prospectus for more information.

The Fund calculates the NAV per share each business day at the close of trading on the New York Stock Exchange (NYSE) (normally 1:00 p.m. Pacific time). The Fund does not calculate NAV on days the NYSE is closed for trading, which include New Year's Day, Martin Luther King Jr. Day, President's Day, Good Friday, Memorial Day, Independence Day, Labor Day, Thanksgiving Day and Christmas Day.

When determining the NAV, the Fund values cash and receivables at their realizable amounts, and records interest as accrued and dividends on the ex-dividend date. The Fund generally utilizes two independent pricing services to assist in determining a current market value for each security. If market quotations are readily available for portfolio securities listed on a securities exchange, the Fund values those securities at the last quoted sale price or the official closing price of the day, respectively, or, if there is no reported sale, within the range of the most recent quoted bid and ask prices. The Fund values over-the-counter portfolio securities within the range of the most recent bid and ask prices. If portfolio securities trade both in the over-the-counter market and on a stock exchange, the Fund values them according to the broadest and most representative market.

Generally, trading in corporate bonds, U.S. government securities and money market instruments

is substantially completed each day at various times before the close of the NYSE. The value of these securities used in computing the NAV is determined as of such times. Occasionally, events affecting the values of these securities may occur between the times at which they are determined and the close of the NYSE that will not be reflected in the computation of the NAV. The Fund relies on third party pricing vendors to monitor for events materially affecting the value of these securities during this period. If an event occurs, the third party pricing vendors will provide revised values to the Fund.

### **FAIR VALUATION - INDIVIDUAL SECURITIES**

Since the Fund may invest in securities that are restricted, unlisted, traded infrequently, thinly traded, or relatively illiquid, there is the possibility of a differential between the last available market prices for one or more of those securities and the latest indications of market values for those securities. The Fund has procedures, approved by the board of trustees, to determine the fair value of individual securities and other assets for which market prices are not readily available (such as certain restricted or unlisted securities and private placements) or which may not be reliably priced (such as in the case of trade suspensions or halts, price movement limits set by certain foreign markets, and thinly traded or illiquid securities). Some methods for valuing these securities may include: fundamental analysis (earnings multiple, etc.), matrix pricing, discounts from market prices of similar securities, or discounts applied due to the nature and duration of restrictions on the disposition of the securities. The board of trustees oversees the application of fair value pricing procedures.

The application of fair value pricing procedures represents a good faith determination based upon specifically applied procedures. There can be no assurance that the Funds could obtain the fair value assigned to a security if they were able to sell the security at approximately the time at which a Fund determines its NAV per share.

### **SECURITY VALUATION - U.S. PASS-THROUGH SECURITIES, CMO, ABS, MBS**

Mortgage pass-through securities (such as Ginnie Mae, Fannie Mae and Freddie Mac), other mortgage-backed securities (MBS), collateralized mortgage obligations (CMOs) and asset-backed securities (ABS), generally trade in the over-the-counter market rather than on a securities exchange. The Fund may value these portfolio securities by utilizing quotations from bond dealers, information with respect to bond and note transactions and may rely on independent pricing services. The Fund's pricing services use valuation models or matrix pricing to determine current value. In general, they use information with respect to comparable bond and note transactions, quotations from bond dealers or by reference to other securities that are considered comparable in such characteristics as rating, interest rate, maturity date, option adjusted spread models, prepayment projections, interest rate spreads and yield curves. Matrix pricing is considered a form of fair value pricing.

### **SECURITY VALUATION - CORPORATE DEBT SECURITIES**

Corporate debt securities generally trade in the over-the-counter market rather than on a securities exchange. The Fund may value these portfolio securities by utilizing quotations from bond dealers, information with respect to bond and note transactions and may rely on independent pricing services to assist in determining a current market value for each security. The Fund's pricing services uses independent quotations from bond dealers and bond market activity to determine current value.

### **SECURITY VALUATION - SENIOR SECURED CORPORATE LOANS**

Senior secured corporate loans with floating or variable interest rates generally trade in the over-the-counter market rather than on a securities exchange. The Fund may value these portfolio securities by utilizing quotations from loan dealers and other financial institutions, information with respect to bond and note transactions and may rely on independent pricing services to assist in determining a current market value for each security. These pricing services may utilize independent market quotations from loan dealers or financial institutions and may incorporate valuation methodologies that incorporate multiple

bond characteristics. These characteristics may include dealer quotes, issuer type, coupon, maturity, weighted average maturity, interest rate spreads and yield curves, cash flow and credit risk/quality analysis.

### **SECURITY VALUATION - MUNICIPAL SECURITIES - MATRIX PRICING (FAIR VALUATION)**

Municipal securities generally trade in the over-the-counter market rather than on a securities exchange. The Fund's pricing services use valuation models or matrix pricing to determine current value. In general, they use information with respect to comparable bond and note transactions, quotations from bond dealers or by reference to other securities that are considered comparable in such characteristics as rating, interest rate and maturity date. Matrix pricing is considered a form of fair value pricing.

### **SECURITY VALUATION - OPTIONS**

The Fund values portfolio securities underlying actively traded call options at their market price as determined above. The current market value of any option the Fund holds is its last sale price on the relevant exchange before the Fund values its assets. If there are no sales that day or if the last sale price is outside the bid and ask prices, the Fund values options within the range of the current closing bid and ask prices if the Fund believes the valuation fairly reflects the contract's market value.

### **VALUATION - FOREIGN SECURITIES - COMPUTATION OF U.S. EQUIVALENT VALUE**

The Fund generally determines the value of a foreign security as of the close of trading on the foreign stock exchange on which the security is primarily traded, or as of the close of trading on the NYSE, if earlier. The value is then converted into its U.S. dollar equivalent at the foreign exchange rate in effect at the close of the NYSE (generally 1:00 p.m. Pacific time) on the day that the value of the foreign security is determined. If no sale is reported at that time, the foreign security will be valued within the range of the most recent quoted bid and ask prices. Occasionally events (such as repatriation limits or restrictions) may impact the availability or reliability of foreign exchange rates used to convert the U.S. dollar equivalent value. If such an event occurs, the foreign exchange rate will be valued at fair value using procedures established and approved by the board of trustees.

## **VALUATION – FOREIGN SECURITIES – POTENTIAL IMPACT OF TIME ZONES AND MARKET HOLIDAYS**

Trading in securities on foreign securities stock exchanges and over-the-counter markets, such as those in Europe and Asia, may be completed well before the close of business on the NYSE on each day that the NYSE is open. Occasionally, events occur between the time at which trading in a foreign security is completed and the close of the NYSE that might call into question the availability (including the reliability) of the value of a foreign portfolio security held by the Fund. As a result, the Fund may be susceptible to what is referred to as “time zone arbitrage.” Certain investors in the Fund may seek to take advantage of discrepancies in the value of the Fund’s portfolio securities as determined by the foreign market at its close and the latest indications of value attributable to the portfolio securities at the time the Fund’s NAV is computed. Trading by these investors, often referred to as “arbitrage market timers,” may dilute the value of the Fund’s shares, if such discrepancies in security values actually exist. To attempt to minimize the possibilities for time zone arbitrage, and in accordance with procedures established and approved by the board of trustees, the managers monitor price movements following the close of trading in foreign stock markets through a series of country specific market proxies (such as baskets of American Depositary Receipts (ADRs), futures contracts and exchange traded funds).

These price movements are measured against established trigger thresholds for each specific market proxy to assist in determining if an event has occurred that might call into question the availability (including the reliability) of the values of foreign securities between the times at which they are determined and the close of the NYSE. If such an event occurs, the foreign securities may be valued using fair value procedures established and approved by the board of trustees. In certain circumstances these procedures include the use of independent pricing services. The intended effect of applying fair value pricing is to compute an NAV that accurately reflects the value of a Fund’s portfolio at the time that the NAV is calculated, to discourage potential arbitrage market timing in Fund shares, to mitigate the dilutive impact of such attempted arbitrage market timing and to be fair to purchasing, redeeming and existing shareholders.

However, the application of fair value pricing procedures may, on occasion, worsen rather than mitigate the potential dilutive impact of shareholder trading.

In addition, trading in foreign portfolio securities generally, or in securities markets in a particular country or countries, may not take place on every NYSE business day. Furthermore, trading takes place in various foreign markets on days that are not business days for the NYSE, and on which the Fund’s NAV is not calculated. Thus, the calculation of the Fund’s NAV does not take place contemporaneously with the determination of the prices of many of the foreign portfolio securities used in the calculation. If events affecting the last determined values of these foreign securities occur (determined through the monitoring process described above), the securities will be valued at fair value determined in good faith in accordance with the Fund’s fair value procedures established and approved by the board of trustees.

## **SHARE CLASSES**

Class 1, Class 2, Class 3 and Class 4 shares of the Funds are identical except that Class 2, Class 3 and Class 4 each have a distribution plan or “rule 12b-1” plan, as described below for Class 2 shares and in their respective prospectuses for Class 3 and Class 4 shares. Class 3 shares may assess a 1.00% redemption fee, as described in the prospectuses for Class 3 shares.

**Distribution and service (12b-1) fees.** Class 2 has a distribution plan, sometimes known as a rule 12b-1 plan, that allows the Fund to pay distribution fees to those who sell and distribute Class 2 shares and provide services to shareholders and Contract Owners. Because these fees are paid out of Class 2’s assets on an on-going basis, over time these fees will increase the cost of an investment, and may cost you more than paying other types of sales charges. While the maximum amount payable under most Funds’ Class 2 rule 12b-1 plan is 0.35% per year of the Fund’s Class 2 average daily net assets, the board of trustees has set the current rate at 0.25%. However, Franklin Strategic Income Securities Fund, Templeton Global Asset Allocation Fund, Templeton Developing Markets Securities Fund, Templeton Foreign Securities Fund and Templeton Global Bond Securities Fund each have a maximum rule 12b-1 plan fee of 0.25% per year. A portion of the fees payable to Franklin Templeton

Distributors, Inc. (Distributors) or others under the rule 12b-1 plan may be retained by Distributors for distribution expenses.

Subject to applicable law, the board of trustees may from time to time, without the approval, vote or consent of shareholders of the Fund or any class, combine, merge or otherwise consolidate the shares of two or more classes of shares of the Fund with and/or into a single class of shares of the Fund, with such designation, preference, conversion or other rights, voting powers, restrictions, limitations as to dividends, qualifications, terms and conditions of redemption and other characteristics as the board of trustees may determine. Such transactions may be effected through share-for-share exchanges, transfers or sales of assets, shareholder in-kind redemptions and purchases, exchange offers, or any other method approved by the board of trustees.

#### **ADDITIONAL POLICIES**

Please note that the Fund maintains additional policies and reserves certain rights, including:

- The Fund may restrict, reject or cancel any purchase orders, including an exchange request.

- At any time, the Fund may establish or change investment minimums.
- The Fund may make material changes to or discontinue the exchange privilege on 60 days' notice to insurance company or Fund of Fund shareholders, or as otherwise provided by law.
- Purchases of shares of the Fund (including the purchase side of an exchange) may be made only when such shares are eligible for sale in the appropriate state or jurisdiction.
- In unusual circumstances, we may temporarily suspend redemptions or postpone the payment of proceeds, as allowed by federal securities laws.
- For redemptions over a certain amount, the Fund may pay redemption proceeds in securities or other assets rather than cash if the manager determines it is in the best interest of the Fund, consistent with applicable law.
- To permit their investors to obtain the current price, participating insurance companies and Funds of Funds are responsible for transmitting all orders to the Fund promptly.

---

## Questions

More detailed information about the Trust and the Fund's account policies can be found in the Fund's SAI. If you have any questions about the Fund, you can write to us at One Franklin Parkway, P.O. Box

7777, San Mateo, CA 94403-7777. You can also call us at 1-800/362-6243 (a toll-free number). For your protection and to help ensure we provide you with quality service, all calls may be monitored or recorded.

[THIS PAGE INTENTIONALLY LEFT BLANK]



# FOR MORE INFORMATION

For information on the Fund, including a free copy of the Fund's prospectus and Statement of Additional Information, and the Fund's Annual and Semiannual Reports, contact your financial advisor or the insurance company offering your Contract.

Shares of the Fund are offered generally only to insurance company separate accounts to serve as the investment vehicle for variable insurance contracts (Contracts) and to Funds of Funds; they and are not offered to the public. Because of this, the Fund's offering documents and shareholder reports are not available on our public website at [franklintempleton.com](http://franklintempleton.com).

Not all Funds and classes are available in all Contracts. For information on the terms of investment in a Contract, please consult the Contract prospectus that accompanies this Fund prospectus.

You can learn more about the Fund in the following documents:

## **Annual/Semiannual Fund Reports to Shareholders**

Include a discussion of recent market conditions and Fund strategies that significantly affected Fund performance during its last fiscal year, financial statements, detailed performance information, portfolio holdings and, in the annual report only, the Independent Registered Public Accounting Firm's report.

## **STATEMENT OF ADDITIONAL INFORMATION**

Contains more information about the Fund, its investments, policies, and risks. It is incorporated by reference into (is legally a part of) this prospectus.

You also can obtain information about the Funds by visiting the SEC's Public Reference Room in Washington, DC (phone 1-202/551-8090) or the EDGAR Database on the SEC's Internet site at <http://www.sec.gov>. You can obtain copies of this information, after paying a duplicating fee, by writing to the SEC's Public Reference Section, Washington, DC 20549-0102 or by electronic request at the following email address: [publicinfo@sec.gov](mailto:publicinfo@sec.gov).